



## An Architect's Guide

TO TRAVERTINE STONE VENEER WALL PANELS

When it comes to selecting the right materials for your project, it's important to consider every last detail during the design phase in order to streamline your processes on the job site later.

We've put together this guide to help you and your clients better understand manufactured stone veneer and, ultimately, select the material that's best-suited for the job.

# Large Format Architectural Veneer Panels

**Non-Structural**, Decoartive finish material only. Installed over **code-approved** exterior wall system with Polymer Modified Mortar Type S.

## PRODUCT SPECIFICATIONS

- **Thickness:** 1/8"
- **Panel Dimensions:** 47"W x 94"L
- **Weight:** 26 lb per Panel
- **Material:** Manufactured Travertine Stone veneer
- **Joint Size:** 1/8 architectural joint recommended
- **Installation Orientation:** Vertical or horizontal
- **Installation Method:** Polymer Modified mortar or Construction Adhesive
- **System Classification:** Non-structural decorative veneer panel system
- **ASTM Classification:** Class A Fire Rated
- **Finish Application:** Interior & Exterior
- **Cut Tools:** Long Cut Snip, Circular Saw, Track Saw, Laser Cut



Lightweight, Large - format surface System

### Technical Data

- Absorption & Density
- Water Tightness
- Flexural Strength
- Flatwise Tensile Bond Strength
- Freeze- Thaw Durability
- Thermal Shock
- Flame spread Index ( Class A rating)

## Installation

- **Recommended Substrate:** Cement backer board, CMU, wood sheathing , metal, drywall , mansonry and much more
- **Installation Method:** Adhered using polymer-modified thin-set-mortar for exterior and interior bathrooms, sauna (were moisture exist) .
- **Installing on Drywall** use Loctite PL Premium or PL Max Construction Adhesive or SikaBond Construction Adhesive.
- **Grout Joints:** 1/8-3/4 ( as per design preference)
- **Sealant:** Optional; use breathable stone veneer sealer if required
- **Easily cut to desired dimensions or shapes for design flexibility**
- **Easy Installation – Just Like Faux Stone or Exterior Tiles**

## Sustainability and Certifications

- **Natural Stone Powder and Minerals**
- **ASTM Test Reports :**Evaluation Certificate with a trusted **ISO17025** accredited lab .
- ASTM E-84-2024
- ASTM C97/ C121
- ASTM C1185
- ASTM C880
- ASTM C297
- ASTM C666
- ASTM C484
- **Our** company is **fully insured** and ready to meet your project’s standards and expectations.

## Packaging & Delivery

- **Packaging :** Crated with protective foam/padding in a wooden box.
- **Lead Time:** 2-4 months
- **Minimum Order :** 20 panels and up order required





## What is Manufactured Stone Veneer?

Manufactured stone veneer, also known as Faux /Cultured stone, is a light-weight building material used as a decorative wall covering for exterior or interior surfaces by mimic the appearance of a natural stone wall surface without the cost and weight of real full- thickness stone .

Travertine thin stone veneer is a durable, lightweight wall panels ideal for both interior and exterior applications. It features **Low water absorption, UV stability, Crack Resistance**, and is rated **Class A** fire retardant, making it a safe and long-lasting choice for a variety of design projects.

# Durability

## High-Quality Raw Materials

Our stone veneer is crafted using a proprietary blend of raw natural stone powder, acrylic emulsion, double layer fiberglass mesh and premium iron oxide pigments, ensuring structural strength and color longevity. These materials are engineered to resist cracking, chipping, and fading—even in harsh weather conditions.

## Engineered for Weather Resistance

Designed to withstand freeze-thaw cycles, UV exposure, and moisture, our veneer is ideal for both indoor and outdoor applications. The surface has minimal water absorption, reducing the risk of damage from expansion and contraction over time.

## Lightweight but Strong

While thinner and lighter than natural stone, our product maintains excellent compressive strength. This makes it easier to install without compromising on structural reliability.

## Colorfast & UV-Stable Pigments

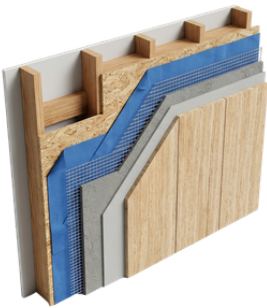
Using natural minerals like Iron Oxide UV-resistant pigments. This ensures long-lasting vibrancy without peeling or fading over time.

## Consistent Quality Control

Each piece is produced in controlled conditions to ensure uniform strength, density, and finish—unlike natural stone, which can vary significantly in quality.

## Low Maintenance & Long-Term Value

Once installed properly, our travertine stone veneer requires minimal maintenance and can last for decades to come without needing replacement or refinishing.



Stone Veneer on Wood Framing

- No ties or footings required
- Adheres to any structurally sound surface
- Simple installation process:
  - WRB
  - Lath
  - Scratch Coat
  - Mortar & Grout
- Light-weight for easier handling
- Creates less waste compared to natural stone



## Range of Applications:

- Interior Wall Decoration
- Exterior Facades
- Outdoor living
- Commercial
- Multi-family
- Hospitality industry
- Bathrooms Walls



## Longevity

### Superior Durability

- Can endure decades of weathering with little change to colors

### Weather Resistant

- Can freeze, thaw, heat up, and cool down without cracking, chipping, or fading.

### Maintenance Free and Ready to Install

- No painting, coating, or sealing required.

### Warranty Backed

- Quality manufactured stone veneer companies provide extensive warranty coverage for 25 years.

# Key Advantages

## Eco-Conscious Composition

- Made with natural minerals, clay, and inorganic inks
- Uses a water-based acrylic binder, reducing harmful VOCs
- Lightweight design helps lower transportation emissions
- Low environmental impact and long product lifespan

## Ultra-Thin & Lightweight

- Only 1/8" thick – ideal for new construction and retrofits
- Reduces dead load on buildings vs. full-thickness stone
- Easy to cut, shape, and install with minimal tools

## Freeze-Thaw Durable

- Engineered to withstand exterior climate cycles
- Low water absorption minimizes cracking or delamination
- Stable in freeze-thaw conditions – ideal for exterior walls, columns, facades

## Fire & UV Resistant

- UV-stable pigments resist fading over time
- Will not melt or release toxic gases in high-heat environments
- Inorganic components provide natural fire resistance

## Realistic Natural Stone Appearance

- Authentic travertine look and texture
- Made with natural stone powder for true-to-life feel and color depth
- Can be applied over existing surfaces (concrete, wood, drywall, etc.)

## Design Flexibility

- Compatible with curved or uneven surfaces due to its flexible backing (fiberglass mesh)
- Available in a range of colors, finishes, and patterns
- Customizable to suit both modern and classic architectural styles



# Aesthetic

Travertine Thin Stone Veneer is more than just a surface — it's an inspirational design element, born from the fusion of innovative technology and creative vision.

We blend art with science to go beyond what nature offers — replicating the beauty of natural stone while delivering enhanced **color consistency, durability, and design flexibility.**

Crafted with architects and designers in mind, it's where timeless material meets modern performance.

# Key Aesthetic Qualities

- Mimics the visual depth and organic textures of natural quarried travertine
- Elegant Matte Finish
- Captures the timeless beauty of traditional travertine in a modern, flexible format
- Versatility Application: Can be used vertically or horizontally on any flat surfaces.





TRAVERTINE Stone Veneer

## Cleaning

To clean dirt or other particles first try a simple soft bristle brush. If necessary, use a solution of mild detergent with water and scrub the surface with a soft bristle brush. Rinse with clean water to remove any cleaning solution that might remain on the surface. If the stone has a white stain deposit (efflorescence), see below recommendations. Never use wire brushes, acid cleaners, power washers, bleach, paint remover, or any other type of concrete cleaner.



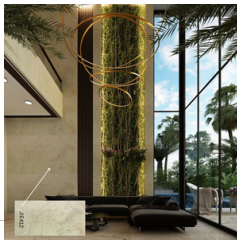
## Efflorescence

When efflorescence occurs, as it does with many masonry products, it is usually the result of moisture migration through the masonry substrate. Once the moisture is on the masonry surface, it evaporates, depositing dissolved salts in the form of efflorescence. Efflorescence naturally disappears over time as long as the moisture source is controlled or eliminated. If the stain will not wash off, do not apply chemicals or cleaners to the stone. Call EliteAzure Stone Solutions customer service to discuss optional solutions.

## Protective Treatment

It is not required to seal our manufactured stone veneer. A sealer will provide added protection and will usually be easier to clean if the surface becomes dirty. If you choose to use a sealer for added protection, use only a silane or siloxane-based penetrating, breathable masonry sealer.

*Note: A sealer may affect the stone color and may create a gloss or matte finish. Always test a small area beforehand.*



Discover Our Travertine Selection

For more information about Travertine Stone Selection visit [www.eliteazure.com](http://www.eliteazure.com)



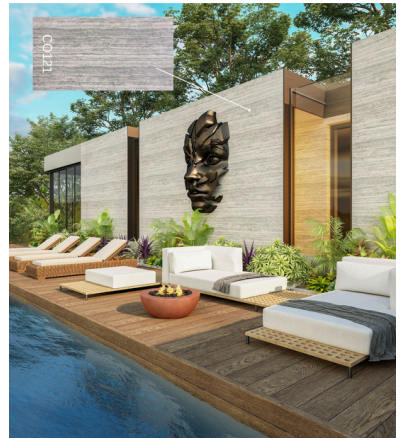
ELITEAZURE LLC  
Office: 850-738-9050  
Email: [info@eliteazure.com](mailto:info@eliteazure.com)



Explore an extensive selection of designs in our full catalog.

<https://eliteazure.com/catalogue/>







## The Bottom Line

Whether you're designing modern minimalism or timeless luxury, this veneer delivers both aesthetic impact and practical flexibility — all while pushing the boundaries of what natural stone can be.

### Why Architects & Designers Choose Us?

- **Lightweight, Limitless Design**— Natural Travertine beauty, without the bulk. Use it on Exterior Facades, Feature Walls, Fireplaces. Easily installs on drywall to create a striking stone feature wall with minimal structural preparation . Vertically or horizontally applications *without structural* reinforcement.
- **Precision Look, Every Time** – Say goodbye to inconsistent veining and color shifts. Our veneers are engineered for visual consistency, so your render matches the reality.
- **Cost-Effective Without Compromise** – Cut material, transport and install costs by up to 50%. Deliver a high-end finish, stay on budget, and impress your clients.
- **Easy Installation** – Just Like Cultured Stone or Final Stucco Coat
- **Eco-Friendly** – Contributes to LEED credits through use of natural components, low to no VOC's water-based acrylics.
- **Build to Last**- Class A Fire Rated/ Crack and Stain resistant/ Water-Moisture resistance ideal for both interior and exterior applications.
- **Durability** - *Stone Powder* and double Fiberglass Mesh. The main ingredients offers several advantages as a component of concrete, the first of which being its increased *Strength*. This is achieved by reducing the permeability of the concrete, making it more *Durable* and *Resistant* to weathering, *Cracking*, and other forms of damages.

Contact us at [1850-738-9050](tel:1850-738-9050) or [info@eliteazure.com](mailto:info@eliteazure.com) to request samples or schedule a quick consultation.